

**ehB**  
RESIDENTIAL

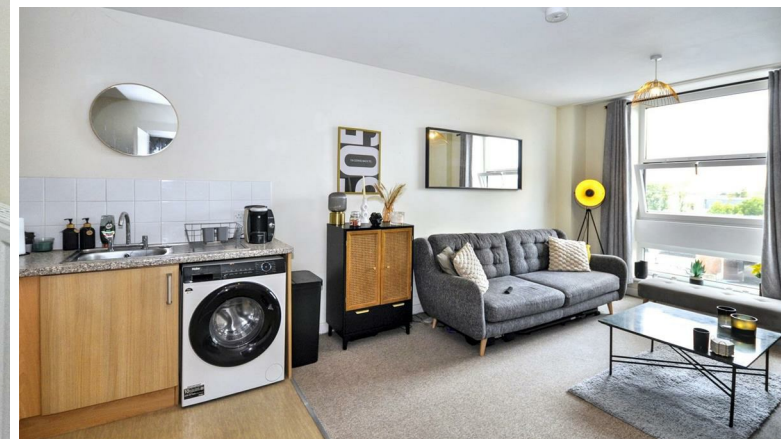
Your Property - Our Business



41, The Space, Leamington Spa

£1,150 Per Calendar  
Month





A fourth floor, two bedroom Apartment situated in the heart of the town centre. Offered Part Furnished & Available End of September

7'1" x 5'11" (2.16 x 1.81)

#### Living Room/Kitchen

20'4" x 10'9" (6.20 x 3.28)

#### Bedroom 1

12'2" x 10'5" (3.71 x 3.19)

#### Bedroom 2

8'3" x 12'11" (2.52 x 3.96)

#### Bathroom



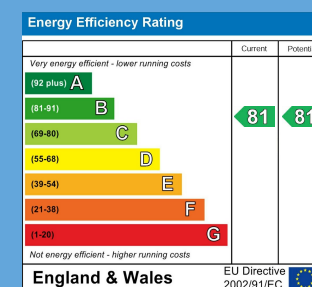


## Your Property - Our Business

- Residential Estate Agents •
- Lettings and Property Managers •
- Land and New Homes Agents •

Leamington Spa Office  
Somerset House  
Clarendon Place  
Royal Leamington Spa  
CV32 5QN

☎ 01926 881144    🌐 [ehbresidential.com](http://ehbresidential.com)



Also at: Warwick, 17-19 Jury St, Warwick CV34 4EL